

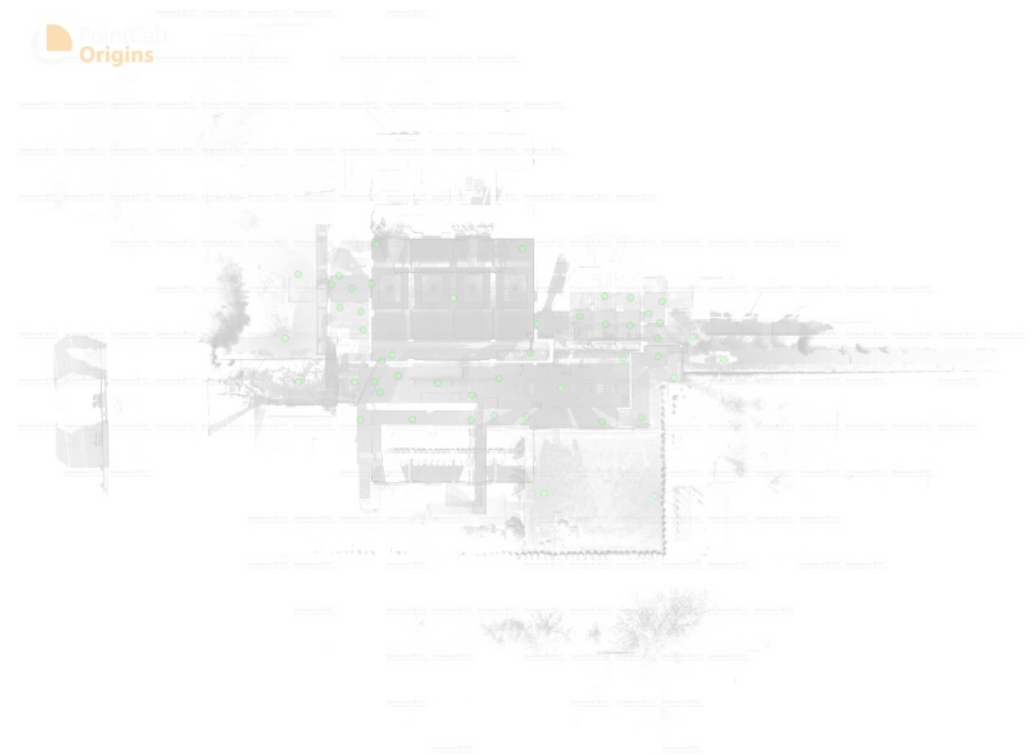
WGO

Zespół przejmujący:

Data nabycia:

07.11.2025

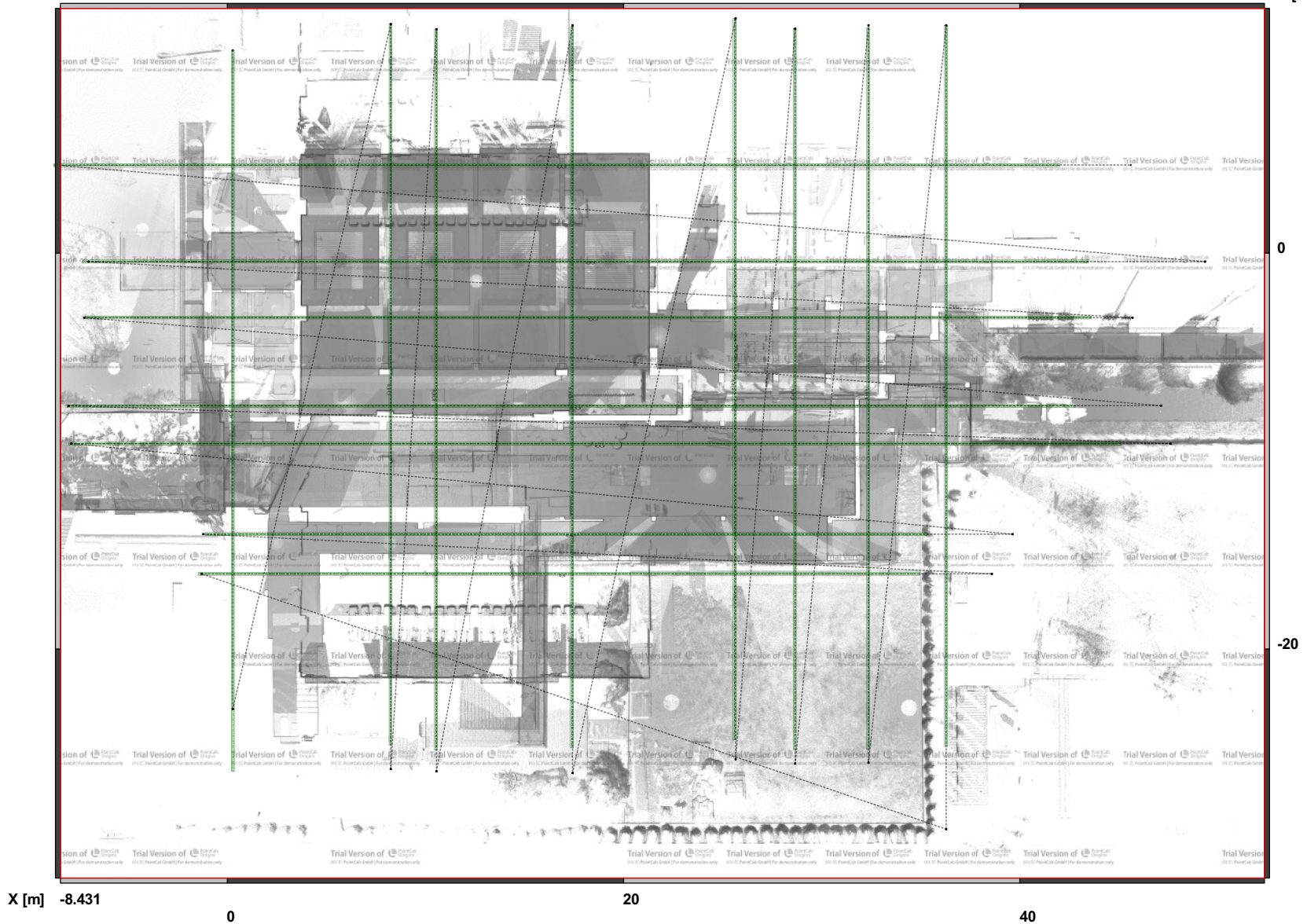
Komentarz:



Informacje o rzucie

Wersja pliku LSE:	4
Widok:	Top
Pełny rozmiar kafelka:	60.7812 x 43.9193 [m]
Rozdzielczość:	0.005 [m]
Promień skanu:	30 [m]
Rozmiar Arkusza:	A4
DPI Arkusza:	150 dpi

A4 Skala 1:300 Y [m]



Scan Information

Scan #	Scan Name	Pos X [m]	Pos Y [m]	Pos Z [m]	Omega (°)	Phi (°)	Kappa (°)
0	WGO- 339	36.542	-10.082	0.503	-0.021	-0.011	-167.186
1	WGO- 342	34.795	-7.820	0.552	-0.033	0.014	167.236
2	WGO- 343	33.015	-14.408	0.464	0.070	0.026	28.700
3	WGO- 344	34.468	-22.974	0.168	0.007	-0.017	159.608
4	WGO- 345	22.400	-22.667	0.209	-0.028	0.055	-110.323
5	WGO- 346	28.748	-14.872	0.466	-0.019	0.006	-148.739
6	WGO- 347	31.010	-7.987	0.473	0.002	-0.020	-90.692
7	WGO- 348	24.205	-11.210	0.490	0.046	0.005	44.866
8	WGO- 349	20.507	-14.359	0.456	0.012	0.004	132.730
9	WGO- 350	17.515	-10.190	0.473	-0.016	0.061	-131.356
10	WGO- 351	14.576	-11.994	2.174	-0.013	0.008	143.410
11	WGO- 352	10.875	-10.692	1.975	0.061	0.008	-40.405
12	WGO- 353	6.546	-9.859	2.405	0.062	0.013	-32.732
13	WGO- 354	4.584	-11.739	0.330	0.039	-0.050	56.794
14	WGO- 355	17.026	-14.197	0.319	0.047	0.003	68.122
15	WGO- 356	14.519	-14.772	0.443	0.052	0.024	2.192
16	WGO- 357	8.159	-14.667	0.445	0.058	0.030	-19.203
17	WGO- 358	2.499	-14.672	0.463	0.003	0.023	114.241
18	WGO- 359	3.980	-10.523	0.483	0.029	0.046	38.820
19	WGO- 360	1.820	-10.563	1.230	0.093	-0.029	-2.414
20	WGO- 361	-4.291	-10.524	0.295	0.027	-0.103	41.868
21	WGO- 362	-5.758	-5.785	0.397	0.066	0.053	-91.825
22	WGO- 363	-4.311	1.141	0.394	-0.023	-0.005	77.113
23	WGO- 364	-0.644	0.035	0.584	-0.044	0.052	48.902
24	WGO- 365	3.697	0.127	0.580	0.034	-0.029	-93.144
25	WGO- 366	2.524	-2.919	0.584	-0.034	0.025	6.247
26	WGO- 367	2.741	-4.901	0.583	-0.032	-0.031	20.471
27	WGO- 369	0.231	-2.468	0.583	-0.010	0.000	4.284
28	WGO- 370	0.175	0.988	0.581	0.033	0.039	-179.521

Scan Information

Scan #	Scan Name	Pos X [m]	Pos Y [m]	Pos Z [m]	Omega (°)	Phi (°)	Kappa (°)
29	WGO- 371	1.528	-0.365	0.587	0.014	-0.018	-99.865
30	WGO- 372	12.538	-1.438	0.585	-0.016	0.038	41.680
31	WGO- 373	20.078	3.910	0.899	-0.018	-0.010	-65.938
32	WGO- 374	4.260	4.398	0.898	0.051	0.041	-177.173
33	WGO- 375	5.920	-7.646	0.904	-0.009	0.020	-37.430
34	WGO- 376	4.791	-8.296	0.903	0.022	0.036	132.668
35	WGO- 377	20.940	-7.371	1.315	0.025	-0.009	173.732
36	WGO- 378	21.707	-4.276	0.919	-0.032	0.016	-45.012
37	WGO- 379	26.305	-3.399	0.922	-0.029	-0.024	-58.080
38	WGO- 380	29.149	-4.328	1.656	-0.054	0.035	44.659
39	WGO- 381	29.013	-1.273	1.646	-0.107	0.072	40.576
40	WGO- 382	31.808	-1.407	1.629	0.051	-0.060	-146.051
41	WGO- 383	31.797	-4.428	1.642	-0.027	-0.029	-65.568
42	WGO- 384	33.770	-3.132	0.892	-0.050	-0.013	21.890
43	WGO- 385	35.228	-1.822	0.895	-0.038	-0.029	-77.622
44	WGO- 386	35.014	-4.094	0.895	-0.019	0.004	157.240
45	WGO- 387	34.814	-5.842	0.905	-0.012	-0.026	124.530
46	WGO- 388	38.645	-5.657	0.889	-0.040	0.031	-65.428
47	WGO- 390	41.918	-8.185	1.346	0.022	-0.011	87.534

