

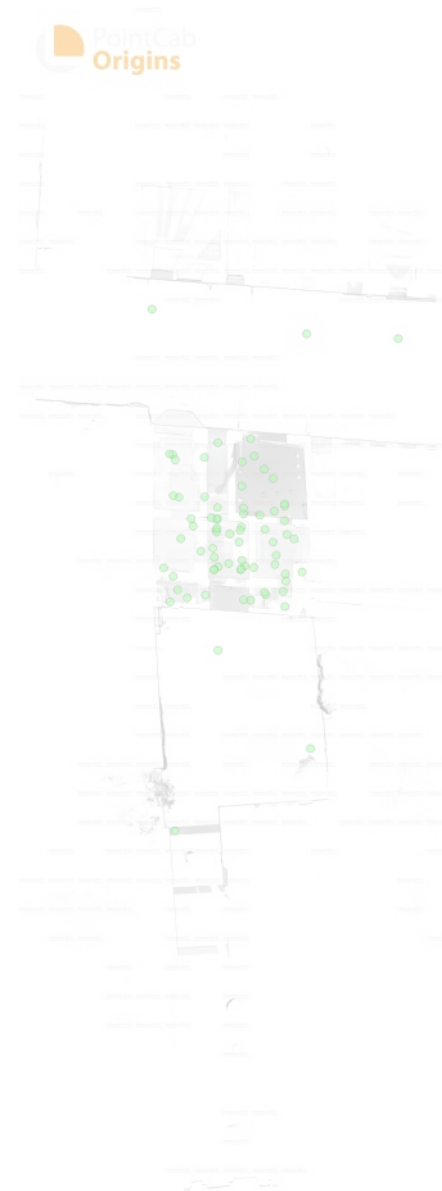
SIE8

Zespół przejmujący:

Data nabycia:

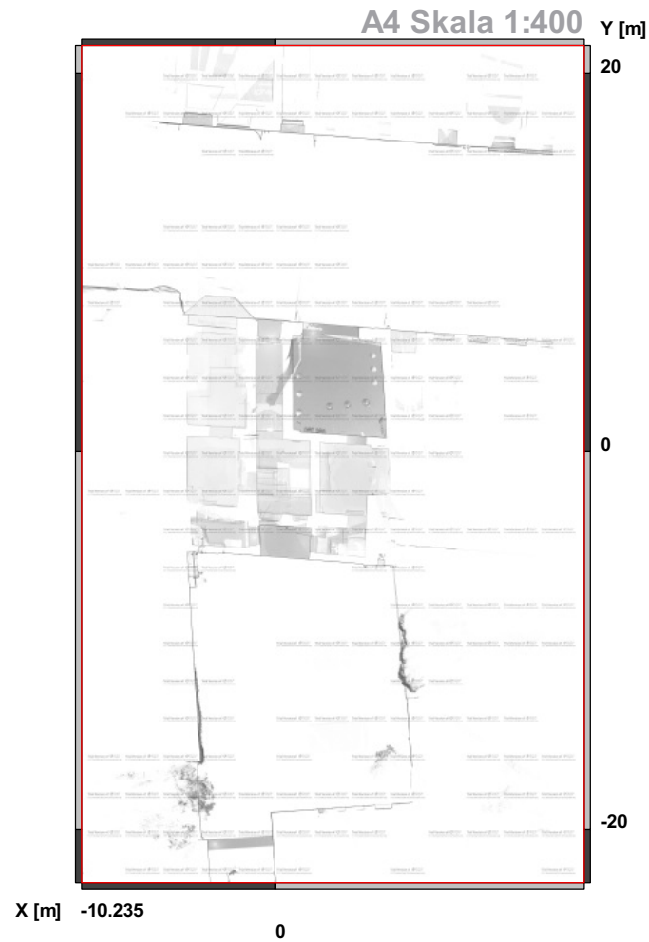
05.08.2025

Komentarz:



Informacje o rzucie

Wersja pliku LSE:	4
Widok:	Top
Pełny rozmiar kafelka:	26.5558 x 44.2942 [m]
Rozdzielczość:	0.002 [m]
Promień skanu:	30 [m]
Rozmiar Arkusza:	A4
DPI Arkusza:	150 dpi



Scan Information

Scan #	Scan Name	Pos X [m]	Pos Y [m]	Pos Z [m]	Omega (°)	Phi (°)	Kappa (°)
0	SIE8- 100	2.929	4.138	4.255	0.030	-0.009	116.307
1	SIE8- 101	4.327	1.591	4.265	0.082	-0.092	11.903
2	SIE8- 102	2.976	-0.010	4.258	-0.072	0.021	-73.250
3	SIE8- 103	5.522	-2.940	4.257	-0.033	0.019	-82.263
4	SIE8- 104	3.016	-4.493	4.316	-0.050	0.028	-85.918
5	SIE8- 105	1.342	-2.750	5.743	0.017	0.042	34.790
6	SIE8- 106	-0.519	-2.753	5.741	-0.048	0.003	-85.411
7	SIE8- 107	-0.387	-0.041	7.555	-0.029	-0.003	-142.570
8	SIE8- 108	-0.289	1.480	7.487	0.037	0.069	5.292
9	SIE8- 109	-0.305	0.667	7.564	-0.042	0.034	-81.192
10	SIE8- 110	-3.349	5.136	7.493	0.045	0.042	83.691
11	SIE8- 111	-2.096	0.738	7.500	-0.079	0.040	-92.889
12	SIE8- 112	-3.334	-3.250	8.046	-0.031	0.057	-74.966
13	SIE8- 113	-3.540	-4.994	7.947	-0.046	0.008	-134.871
14	SIE8- 114	-0.703	0.774	9.802	0.050	-0.110	103.001
15	SIE8- 115	-0.303	0.761	4.100	-0.010	-0.040	-89.090
16	SIE8- 116	-1.202	4.949	4.413	-0.019	-0.024	-66.824
17	SIE8- 117	-3.587	5.193	4.419	-0.056	0.000	-15.807
18	SIE8- 118	-2.946	2.203	4.415	-0.027	-0.046	-25.663
19	SIE8- 119	-1.163	2.226	4.416	0.005	-0.004	-130.965
20	SIE8- 120	-1.969	0.204	4.415	-0.002	0.017	144.358
21	SIE8- 121	-3.983	-2.667	4.415	-0.003	0.012	100.948
22	SIE8- 122	-2.374	-4.724	4.460	0.042	0.035	-157.863
23	SIE8- 123	1.980	-4.901	1.039	-0.002	0.027	-122.925
24	SIE8- 126	-3.206	-20.779	1.806	-0.072	-0.094	109.587
25	SIE8- 127	6.090	-15.121	1.412	0.079	-0.034	31.461
26	SIE8- 128	-0.253	-8.338	1.266	-0.055	-0.081	88.190
27	SIE8- 129	1.501	1.066	7.673	0.007	-0.023	17.615
28	SIE8- 130	3.513	3.503	7.655	-0.049	0.023	-154.029

Scan Information

Scan #	Scan Name	Pos X [m]	Pos Y [m]	Pos Z [m]	Omega (°)	Phi (°)	Kappa (°)
29	SIE8- 131	3.591	1.243	7.646	-0.160	-0.017	-149.133
30	SIE8- 132	1.416	4.636	7.663	0.003	0.079	-46.910
31	SIE8- 133	2.615	0.968	7.643	0.059	-0.043	86.103
32	SIE8- 134	3.513	-0.902	7.639	0.009	-0.044	75.178
33	SIE8- 135	4.337	-5.322	8.072	-0.038	0.054	-96.272
34	SIE8- 136	4.379	-3.089	7.650	0.046	0.100	-58.590
35	SIE8- 59	2.233	5.021	1.039	-0.013	-0.060	-31.880
36	SIE8- 60	-3.205	4.767	0.917	0.079	-0.089	-103.264
37	SIE8- 61	-3.319	2.314	0.912	-0.070	-0.024	34.467
38	SIE8- 62	-2.815	-0.640	0.910	0.061	-0.095	-94.510
39	SIE8- 63	-1.428	-1.533	0.906	0.064	-0.022	-126.270
40	SIE8- 64	-0.245	-2.593	0.897	0.001	-0.021	10.910
41	SIE8- 65	2.215	-2.640	1.051	0.024	-0.024	-101.106
42	SIE8- 66	-0.511	-1.935	0.892	0.034	0.006	-172.913
43	SIE8- 67	3.737	-1.799	1.237	0.017	0.023	148.659
44	SIE8- 68	4.394	-3.574	1.056	-0.061	-0.021	-63.146
45	SIE8- 69	2.937	-4.334	1.039	-0.064	-0.010	-179.885
46	SIE8- 70	4.199	-4.283	1.043	-0.030	0.025	152.060
47	SIE8- 71	1.486	-4.863	0.901	-0.106	-0.009	175.491
48	SIE8- 72	-3.020	-4.185	1.064	-0.042	0.057	-76.999
49	SIE8- 73	-1.108	-4.531	1.066	-0.060	-0.059	140.964
50	SIE8- 74	4.476	-0.375	1.062	-0.051	0.049	65.018
51	SIE8- 75	4.302	1.750	1.048	-0.075	0.044	75.863
52	SIE8- 76	4.314	0.587	1.052	-0.006	0.062	167.721
53	SIE8- 77	1.380	2.974	1.049	0.041	0.033	-170.521
54	SIE8- 78	1.980	6.224	1.045	0.053	-0.009	-136.617
55	SIE8- 79	5.809	13.458	0.226	0.030	-0.046	-90.543
56	SIE8- 81	12.123	13.139	0.170	0.039	-0.049	-90.438
57	SIE8- 82	-4.770	15.157	0.289	0.067	0.014	-140.743

Scan Information

Scan #	Scan Name	Pos X [m]	Pos Y [m]	Pos Z [m]	Omega (°)	Phi (°)	Kappa (°)
58	SIE8- 84	-0.265	5.971	0.855	-0.068	-0.047	-20.219
59	SIE8- 85	-0.307	0.060	0.885	-0.106	-0.003	10.630
60	SIE8- 86	-0.609	-1.305	0.886	-0.082	0.024	34.883
61	SIE8- 87	1.380	-2.151	0.885	-0.062	0.101	80.260
62	SIE8- 88	0.568	-0.309	-0.832	-0.015	0.046	132.890
63	SIE8- 89	1.180	-0.893	-0.670	0.051	-0.014	-118.966
64	SIE8- 90	0.474	-2.374	-0.815	-0.057	0.028	80.947
65	SIE8- 91	1.584	-2.523	-0.817	-0.071	-0.001	-50.500
66	SIE8- 92	3.646	-2.427	-0.821	0.018	0.058	-45.809
67	SIE8- 93	4.973	-0.666	-0.820	0.010	0.074	-0.023
68	SIE8- 94	1.354	0.139	1.561	0.043	-0.021	-106.222
69	SIE8- 95	1.312	-2.781	3.235	-0.058	0.065	164.826
70	SIE8- 96	-0.541	-2.812	3.236	-0.033	-0.025	78.756
71	SIE8- 97	-0.330	-0.206	4.230	-0.040	0.054	-10.848
72	SIE8- 98	1.270	-0.059	4.238	0.011	-0.011	-118.063
73	SIE8- 99	1.502	1.465	4.258	-0.061	0.028	-63.117







