

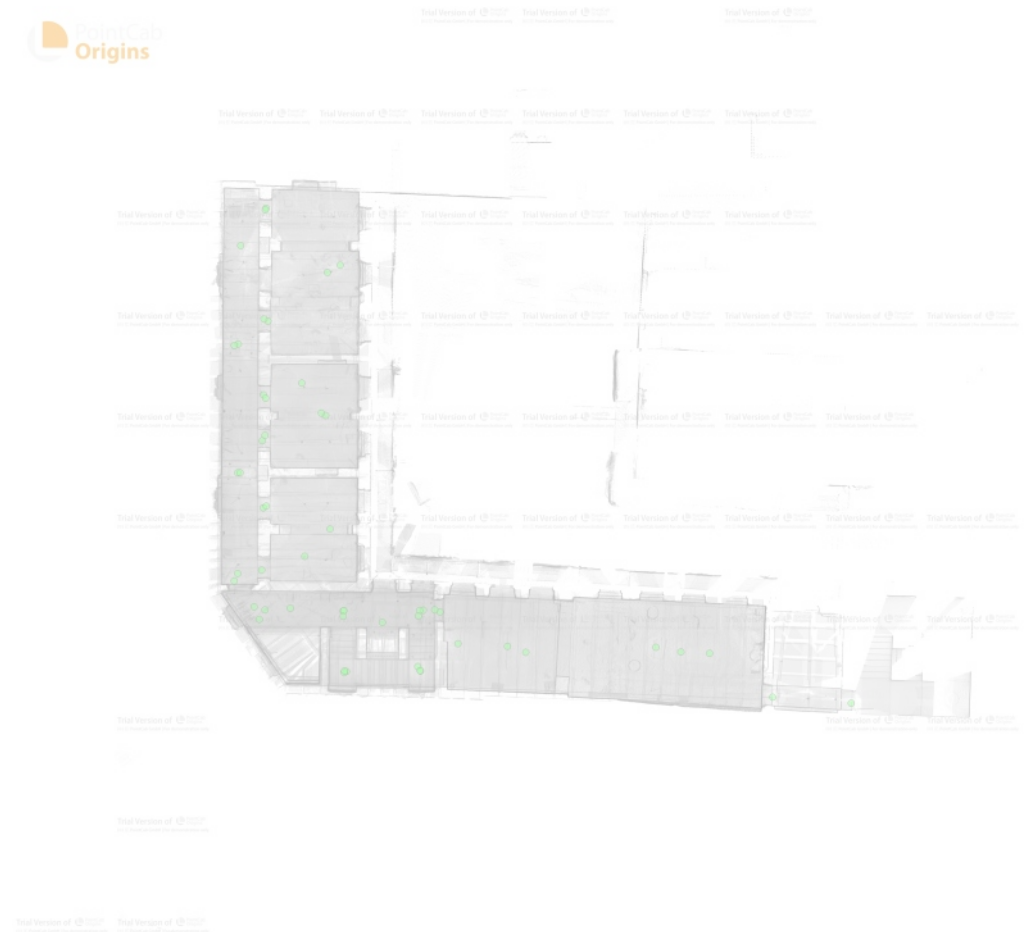
Rynek 9

Zespół przejmujący:

Data nabycia:

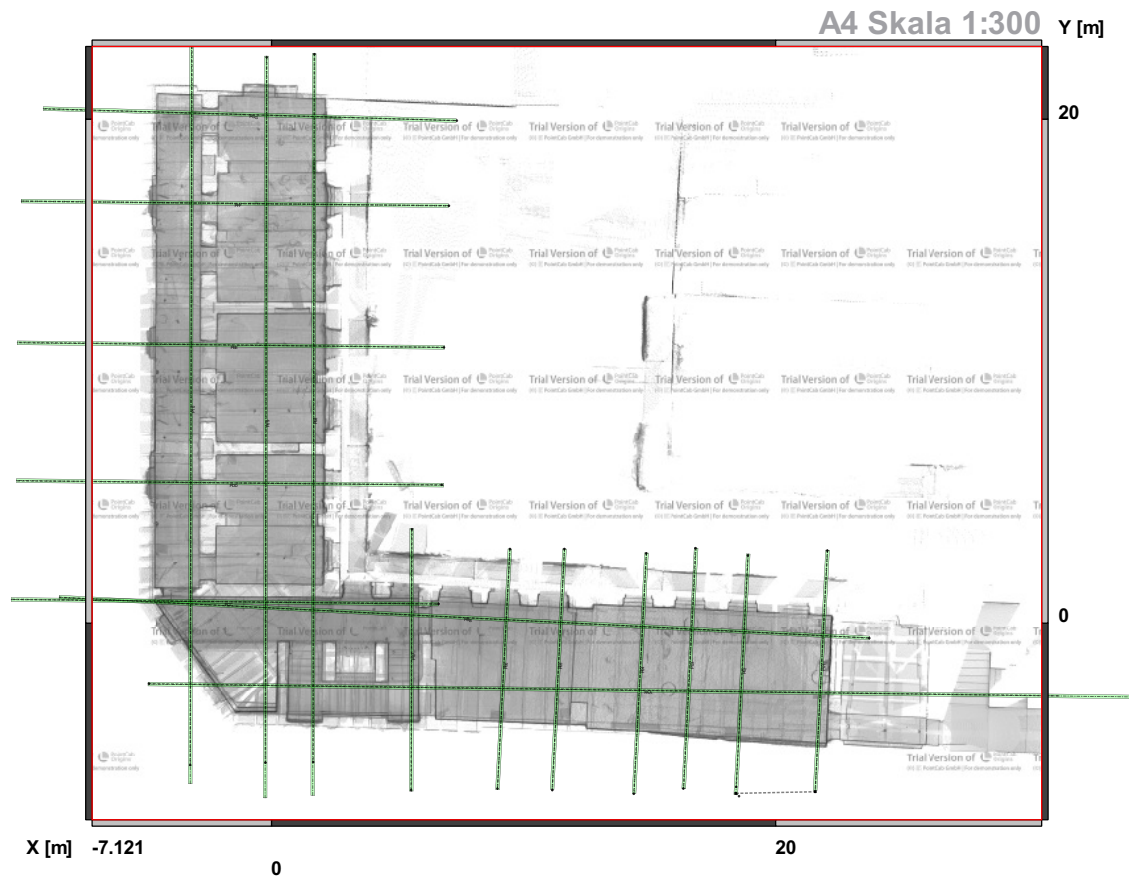
06.02.2026

Komentarz:



Informacje o rzucie

Wersja pliku LSE:	4
Widok:	Top
Pełny rozmiar kafelka:	37.6749 x 30.6837 [m]
Rozdzielczość:	0.005 [m]
Promień skanu:	30 [m]
Rozmiar Arkusza:	A4
DPI Arkusza:	150 dpi



Scan Information

Scan #	Scan Name	Pos X [m]	Pos Y [m]	Pos Z [m]	Omega (°)	Phi (°)	Kappa (°)
0	Rynek 9- 406	5.330	0.110	0.873	0.235	0.146	59.860
1	Rynek 9- 407	1.401	0.095	0.922	0.224	0.115	57.849
2	Rynek 9- 408	-2.489	0.122	0.960	0.213	0.061	66.858
3	Rynek 9- 409	5.188	-2.897	1.850	0.177	-0.150	131.528
4	Rynek 9- 410	1.443	-2.893	3.447	0.176	0.169	36.676
5	Rynek 9- 411	1.378	0.077	4.387	0.090	-0.144	135.573
6	Rynek 9- 412	6.166	0.032	4.226	0.047	-0.183	149.406
7	Rynek 9- 413	9.486	-1.672	4.187	0.191	0.068	53.055
8	Rynek 9- 414	16.829	-1.718	3.949	-0.179	0.091	-78.961
9	Rynek 9- 415	3.316	-0.492	4.382	0.165	-0.049	90.134
10	Rynek 9- 416	-2.770	-0.338	4.401	0.119	0.078	21.529
11	Rynek 9- 417	-4.010	1.551	4.375	0.110	0.019	59.615
12	Rynek 9- 418	-2.666	2.100	4.293	-0.181	0.077	-93.866
13	Rynek 9- 419	0.724	4.117	4.265	-0.160	-0.040	-117.935
14	Rynek 9- 420	-2.575	5.172	4.242	-0.134	0.006	-91.120
15	Rynek 9- 421	-2.630	8.496	4.286	-0.089	0.117	-30.740
16	Rynek 9- 422	-3.717	6.903	4.452	0.145	0.028	62.020
17	Rynek 9- 423	0.285	9.851	4.280	0.054	-0.142	158.334
18	Rynek 9- 424	-2.561	10.752	4.313	-0.115	0.050	-66.275
19	Rynek 9- 425	-3.807	13.282	4.473	-0.035	-0.079	-131.495
20	Rynek 9- 426	-2.340	14.409	4.286	0.002	0.124	27.042
21	Rynek 9- 427	1.217	17.176	4.187	0.039	0.084	46.356
22	Rynek 9- 428	-2.476	19.908	4.271	0.024	-0.074	-136.912
23	Rynek 9- 429	-3.687	18.148	4.274	-0.063	0.048	-47.074
24	Rynek 9- 430	5.066	-2.677	5.310	-0.161	0.099	-81.786
25	Rynek 9- 431	5.140	0.090	4.371	0.174	0.067	49.252
26	Rynek 9- 432	1.429	-2.974	6.873	0.177	0.032	63.260
27	Rynek 9- 433	1.378	-0.186	7.814	-0.074	-0.014	-122.991
28	Rynek 9- 434	5.897	0.123	7.801	0.037	0.117	6.231

Scan Information

Scan #	Scan Name	Pos X [m]	Pos Y [m]	Pos Z [m]	Omega (°)	Phi (°)	Kappa (°)
29	Rynek 9- 435	10.386	-1.973	7.663	-0.100	0.019	-90.603
30	Rynek 9- 436	18.056	-1.964	7.636	-0.131	0.045	-74.460
31	Rynek 9- 437	22.588	-4.199	7.809	0.025	0.183	-2.077
32	Rynek 9- 438	26.481	-4.498	7.790	-0.160	-0.044	-108.583
33	Rynek 9- 439	-3.032	0.282	7.840	0.072	0.065	74.961
34	Rynek 9- 440	-3.842	1.926	7.752	-0.040	0.091	-8.563
35	Rynek 9- 441	-0.519	2.778	7.652	0.056	0.068	45.235
36	Rynek 9- 442	-2.433	5.257	7.661	-0.010	-0.096	-150.161
37	Rynek 9- 443	-3.845	6.912	7.932	0.061	-0.068	144.056
38	Rynek 9- 444	-2.498	8.758	7.624	0.104	0.030	77.614
39	Rynek 9- 445	0.503	9.734	7.614	-0.103	0.092	-57.146
40	Rynek 9- 446	-2.460	10.594	7.616	0.066	0.045	63.180
41	Rynek 9- 447	-4.003	13.203	7.922	0.112	0.041	39.756
42	Rynek 9- 448	-2.547	14.507	7.612	-0.147	0.067	-105.894
43	Rynek 9- 449	0.595	16.807	7.602	-0.049	-0.115	169.783
44	Rynek 9- 450	-2.439	19.999	7.590	-0.131	0.005	-122.202
45	Rynek 9- 451	5.084	-0.172	7.814	0.126	0.032	76.919
46	Rynek 9- 452	5.168	-2.879	8.792	-0.004	-0.068	174.721
47	Rynek 9- 453	1.525	-2.922	10.416	-0.009	0.010	82.408
48	Rynek 9- 454	7.037	-1.535	11.125	-0.024	0.051	35.113
49	Rynek 9- 455	19.473	-2.026	11.123	0.094	0.033	124.270
50	Rynek 9- 456	-1.243	0.202	11.163	-0.053	-0.083	-42.577
51	Rynek 9- 457	-0.670	11.336	11.140	-0.020	0.098	92.607







